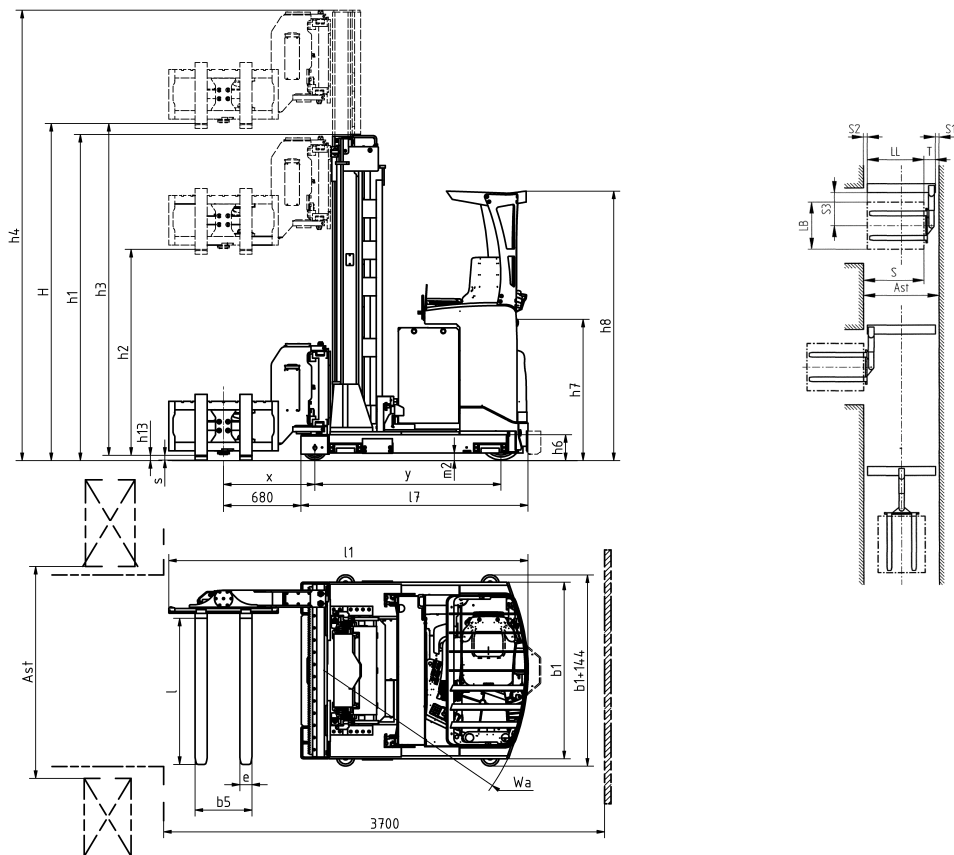


# Swivel reach truck URS

## URS 150

For maximum versatility, the new Tergo Swivelreach URS. A combination of a VNA truck and Reach truck. Providing you with the advantage of a dedicated VNA operation with high degrees of storage capacity together with the flexibility of a free-range reach truck.



Mast type	Lift height H	Height of mast lowered h1	Max mast height h4
Standard/Duplex			
Triplex	4950	2670	5840
	5400	2820	6290
	6600	3220	7490
	7100	3387	7990
	7950	3670	8840
	8550	3870	9440
	9150	4070	10040
	9750	4270	10640
	10350	4470	11240

Distinguishing mark	0	Specification		URS 150		
	1.2	Manufacturer's type designation				
	1.3	Drive: electric (battery or mains), diesel, petrol, fuel gas		Electric		
	1.4	Operator type: hand, pedestrian, standing, seated, order-picker		Seated		
	1.5	Load capacity/rated load	Q	t	1,5	
	1.6	Load centre distance	c	mm	400-600	
	1.8	Load distance, centre of load axle to fork		X		
	1.9	Wheelbase	y	mm	1534	
	Weight	2.1	Service weight incl battery		kg	6674
2.2		Axle load, with load, front/rear		kg		
2.3		Axle load, without load, front / rear		kg	2804 / 3870	
2.4		Axle load, fork outreached with load, front / rear		kg	1322 / 6852	
2.5		Axle load, fork retracted with load, front / rear		kg	2026 / 6148	
Tyres, chassis	3.1	Tyres			Vulcollan	
	3.2	Tyre size, drive side		mm	355*155	
	3.3	Tyre size, load side		mm	200*110	
	3.4	Dimensions additional wheels (castor wheels)		mm		
	3.5	Wheels, number front/rear (drive side/load side, x = driven wheels)			1x/4	
	3.6	Track, drive side	b10	mm		
	3.7	Track, load side	b11	mm	1312	
Dimensions	4.1	Tilt of mast/fork carriage, forward/backward		Grad		
	4.2	Height, mast lowered		h1	mm	See table
	4.3	Free lift		h2	mm	h3/3 + 141
	4.4	Lift height H = h13+h3		H	mm	See table
	4.5	Height, mast extended		h4	mm	See table
	4.6	Straddle lift		h5	mm	
	4.7	Height of overhead guard (cabin)		h6	mm	2205
	4.8	Seat height/stand height		h7	mm	1077
	4.10	Height of wheel arms		h8	mm	230
	4.11	Additional lift		h9	mm	
	4.14	Stand height, elevated		h12	mm	
	4.15	Height lowered		h13	mm	53
	4.19	Overall length		l1	mm	3010
	4.20	Length to face of forks		l2	mm	
	4.21	Overall width		b1	mm	1450
	4.21.1	Width over stabilizers			mm	
	4.22	Fork dimensions		s/e/l	mm	40 / 100 / 800,1000,1150
	4.23	Fork carriage to ISO 2328, clas / form A, B				2/A
	4.24	Width of fork carriage		b3	mm	730
	4.25	Width over forks, min/max		b5	mm	520 / 710
	4.26	Distance between wheel arms		b4	mm	
	4.27	Width across guide rolls		b6	mm	1594
	4.28	Reach distance		l4	mm	
	4.29	Reach lateral		b7	mm	
	4.30	Reach lateral from vehicle centerline		b8	mm	
	4.31	Ground clearance, mast		m1	mm	28
	4.32	Ground clearance, centre of wheelbase		m2	mm	55
	4.33	Aisle width with pallet 1000 x 1200, crosswise		Ast	mm	1640
	4.34	Aisle width for pallet 800 x 1200, lengthwise		Ast	mm	1640
		Transfer aisle		0	mm	
	4.35	Turning radius		Wa	mm	1753
	4.37	Length incl reach legs		l7	mm	1866
	4.38	Distance to swivelling-fork pivot		0	mm	809
Performance data	5.1	Travel speed, with/without load		km/h	12	
	5.1.1	Travel speed with/without load, backwards		km/h	9	
	5.2	Lift speed, with/without load		m/s	0,34 / 0,47	
	5.3	Lowering speed, with/without load		m/s	0,57 / 0,54	
	5.4	Reach speed, with / without load		m/s		
	5.7	Gradient, with/without load		%	4,7 / 5,8	
	5.8	Max gradeability, with / without load, 5 min rating		%	10,4 / 12,3	
	5.9	Acceleration time 0-10 m, with/without load		s	6,0 / 5,5	
	5.10	Service brake: electric, hydraulic			Electric	
	5.10.1	Parking brake: electric, hydraulic			Electric	
Electric engine	6.1	Drive motor, rating S2 60 min		kW	7,2	
	6.2	Lift motor		kW	15	
	6.3	Battery according to DIN 43531/35/36		A,B,C	43531C	
	6.4	Battery voltage / Battery capacity		V/Ah	48 / 840-930	
	6.5	Battery weight		kg	1240 - 1567	
	6.6	Power consumption according to VDI cycle		kWh/h		
Additional data	8.1	Speed regulation			Electric	
	10.1	Operating pressure attachments		bar	150	
	10.2	Oil flow for attachments		l/min	15	
	10.7	Noise level at operator's ear, according to EN 12 053		db(A)	62,1	

\* Varies according to battery size

All rights reserved to change above specification